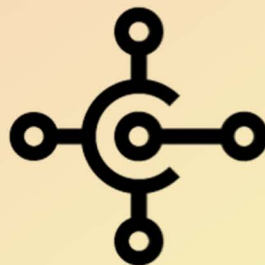
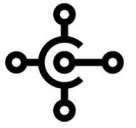


MICROSOFT DYNAMICS 365 BUSINESS CENTRAL

**OUTGROWN SAGE50C? HOW DOES
BUSINESS CENTRAL COMPARE?**



MICROSOFT DYNAMICS 365 BUSINESS CENTRAL



OUTGROWN SAGE50C? HOW DOES BC COMPARE?

OUTGROWN SAGE 50C? HOW DOES BUSINESS CENTRAL COMPARE?

If you are a growing business that has been using Sage 50C for some time, you may be experiencing business pains that it can no longer accommodate.

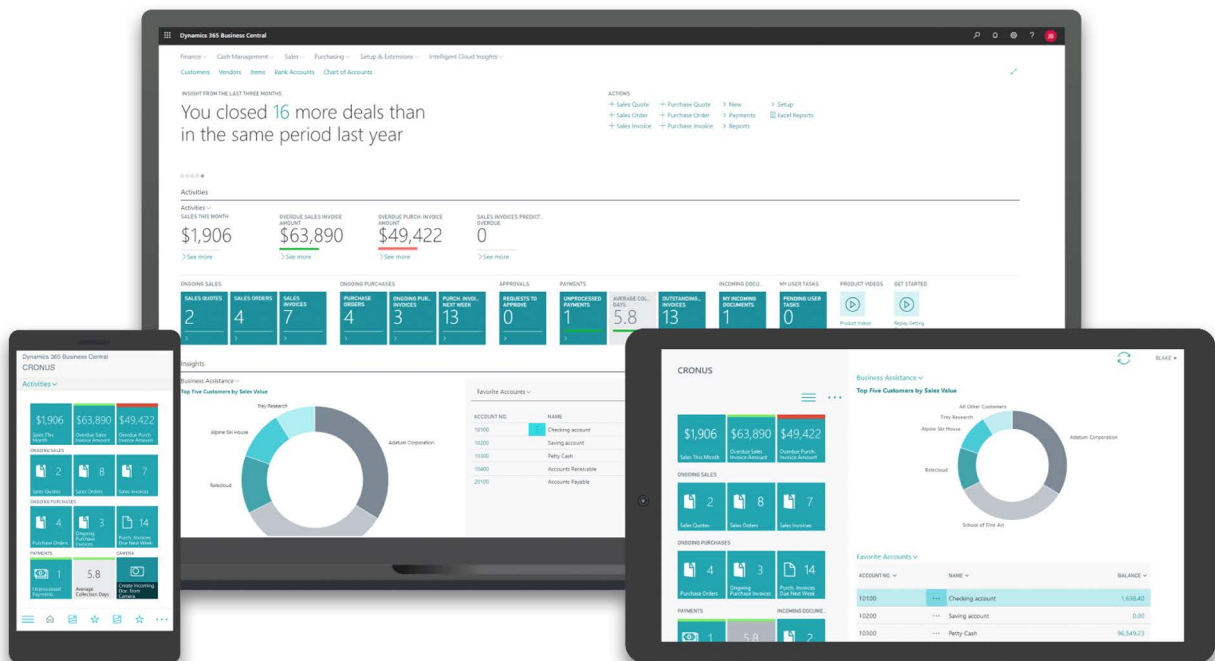
You may be in the market for a system that will not only resolve your current pains, but can also grow with you as a company.

As a full ERP, BC provides capabilities beyond accounting, ranging from contact management and job costing through to inventory and workflow management. Alongside the rest of the Microsoft product stack, it sits on Azure - a scalable platform with seamless integration with Outlook, Teams, Excel & Word, as well as the other Dynamics 365 apps and all the latest technologies for insight and automation, including Power Apps, Power Automate and Power BI.

Both Sage50c and DYNamics 365 Business Central (BC) are solutions for SMBs, however the two are very different. Sage 50c is a legacy system designed to help SMBs manage their accounts, with a focus on the purchase and sales ledger as well as reconciling their bank accounts.

BC is an end-to-end business management solution, designed for SMBs with 1-250 employees and caters for all the challenges a business may face when growing.

You can start small and grow as business requirements evolve.



SAGE50C

BUSINESS CENTRAL

Market	Accounting solution targeted at single company SMB	All-In-one business management solution/ERP targeted at all SMBs
Functionality	<ul style="list-style-type: none"> - Chart of accounts - Sales Processes - Purchases & Processes - Bank Management - Tax Management (MTD Compliant) - Credit Card Processing - Basic Inventory 	<ul style="list-style-type: none"> - General Ledger - Sales Quote to Cash Process - Purchase Quote to Cash Process - Bank Management - Tax Management (MTD Compliant) - Cash Flow Forecasting - Budget Management - Fixed Asset Management - Job Costing - Inventory & Planning - Warehouse Management - Assembly Management - Bill of Materials - Relationship Management
Accessibility	- Remote Data Access (Sage Drive)	- Full cloud solution, accessed through any browser
Office 365 Integration	- Yes additional cost	<ul style="list-style-type: none"> - Given Business Central sits in Azure, there's native integration with the rest of the Microsoft stack - Office 365, the other Dynamics 365 apps and the Power Platform
Volume & Transaction Capabilities	<ul style="list-style-type: none"> - 1.5 million - Server storage and can back up to the cloud at additional cost 	- No transactional or user limitations. 80GB storage capacity (additional can be purchased)
Software Updates	- Updates must be purchased and installed	- Automatic updates. No action needed from the user
Automation	- No solution for automation	- Inbuilt approval workflows and native integration to Power Platform
Customisations & Integrations	- Can integrate with Microsoft 365 with additional charge	<ul style="list-style-type: none"> - Users can personalise screens - Use Microsoft Word to edit reports - Extensions (apps) for development - Integrated with the Power Platform - Excel integration (master data can be opened in excel and pushed directly back into BC) - Integrates natively with Outlook allowing for orders etc to be created directly from emails
Reporting	<ul style="list-style-type: none"> - Pre-set reports for all system areas - Report Designer allows for some customisation 	<ul style="list-style-type: none"> - Pre-set reports for all system areas - Customisable views (like transaction filters, these filters can be saved and ran at the click of a button) - Account Schedules - Native integration with Power BI which can be imbedded with the BC landing page - Jet Reports
Security Roles	- High-level access permissions granted by admin user	- Granular permission detail ie. Read/edit/create/delete to each object and record type granted by admin user
Financial Audit Trail	- Username tagged to every post, deleted transactions appear in red and cannot be deleted	<ul style="list-style-type: none"> - Both document and financial postings are audited - Erroneous postings must be credited/reversed, and cannot be deleted
Intercompany Consolidated Reporting	- No standard functionality	- Standard capabilities to consolidate companies and databases without the need for manual journals
Deferred Revenue & Expenses	- No standard functionality	- Deferred revenue expense capabilities as standard
Bill-to Relationship	- Bill-to relationship for customers and vendors	- Bill-to/ship-to relationship for customers and vendors
Multi-Currency	- Additional fees	- Full multi-currency transactions capabilities Automatic currency rate updates through exchange rate services (some third-party exchange rates services may charge for this service)
Multi-Lingual Functionality	- English and French	- Business Central offers support for multiple languages
CRM Integration	- There are several popular CRM systems that already integrate with Sage 50, these include: Sage CRM, Infor CRM, Act! Growth Suite, Microsoft Dynamics 365	<ul style="list-style-type: none"> - Some sales & marketing capabilities with Relationship Mgmt. module - Native integration to Microsoft Dynamics 365 for Sales - Open API can be used to integrate other CRM's (no middleware)

MICROSOFT DYNAMICS 365 BUSINESS CENTRAL

**OUTGROWN SAGE50C? HOW DOES
BUSINESS CENTRAL COMPARE?**



**WANT TO EXPLORE FURTHER?
WE'RE HERE TO HELP.**

**CONTACT US:
HELLO@DYNAMICSFANATICS.COM**

